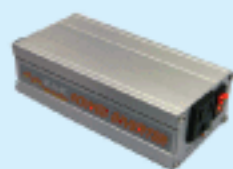
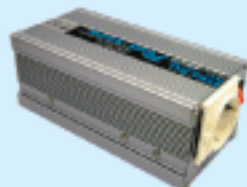


DC/AC Inverter 150~2500W Modified Sine Wave



▲150W / 110V (122x 73x 45 mm)



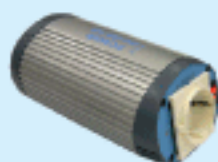
▲300W (165x 90x 75 mm)



▲1000W (320x 210x 85 mm)



▲2500W (430x 210 x159 mm)



▲150W / 230V (165x 90x 70 mm)



▲600W (210x 173x 65 mm)



▲1500W (458x 210x 85 mm)

Features

- Input Protections: Polarity reverse / Over and under voltage / Low battery Alarm and shut down
- Output Protections: Short circuit / Overload / Over temp.
- With power ON/OFF switch and LED indicator
- Input and output fully isolation
- Low power consumption (standby)
- LVD meet EN60950 and e13 mark
- EMC meet EN61000-4-2,3, EN55022

General Specification (Please refer to www.meanwell.com for detail spec.)



ORDER No.	A301	A302
DC input rated voltage	12.6V	25.0V
AC output voltage	230VAC(rms) / 50Hz	
Max. output power	150W, 300W, 600W, 1000W, 1500W, 2500W (optional)	
AC output regulation	±10% rated output voltage	
Bat. low alarm	10±0.5V	20.5±1.0V
Bat. low shut down	9.5±0.5V	19.5±1.0V
IP over voltage protection	15~17V	30~32V
Working temperature	0~30°C (0~25°C for 2500W)	
LVD	Compliance to EN60950-1, EN61558-1	
EMC	Compliance to EN55014-1, EN61000-3-2,3, EN61000-4-2,4,5,6,11	

150W

Order No.	Continue power	Input VDC	Output VAC / Hz	Effi.
A301-150-F3	150W	10-15	230/50	78%
A302-150-F3	150W	21-30	230/50	82%

300W

Order No.	Continue power	Input VDC	Output VAC / Hz	Effi.
A301-300-F3	300W	10-15	230/50	82%
A302-300-F3	300W	21-30	230/50	85%

600W

Order No.	Continue power	Input VDC	Output VAC / Hz	Effi.
A301-600-F3	600W	10-15	230/50	82%
A302-600-F3	600W	21-30	230/50	85%

1000W

Order No.	Continue power	Input VDC	Output VAC / Hz	Effi.
A301-1K0-F3	1000W	10-15	230/50	82%
A302-1K0-F3	1000W	21-30	230/50	85%

1500W

Order No.	Continue power	Input VDC	Output VAC / Hz	Effi.
A301-1K7-F3	1500W	10-15	230/50	82%
A302-1K7-F3	1500W	21-30	230/50	85%

2500W

Order No.	Continue power	Input VDC	Output VAC / Hz	Effi.
A301-2K5-F3	2500W	10-15	230/50	82%
A302-2K5-F3	2500W	21-30	230/50	85%